

STANJE V KMETIJSTVU SLOVENIJE

XXVII tradicionalni posvet
Javne službe kmetijskega svetovanja
Grm Novo mesto, 26. november 2012

Kmetijski inštitut Slovenije
Oddelek za ekonomiko kmetijstva
T. Volk

Prispevek je pripravljen na podlagi rezultatov analitične naloge Spremljanje razvoja kmetijstva v Sloveniji, katere naročnik in financer je Ministrstvo za kmetijstvo in okolje.

VSEBINA

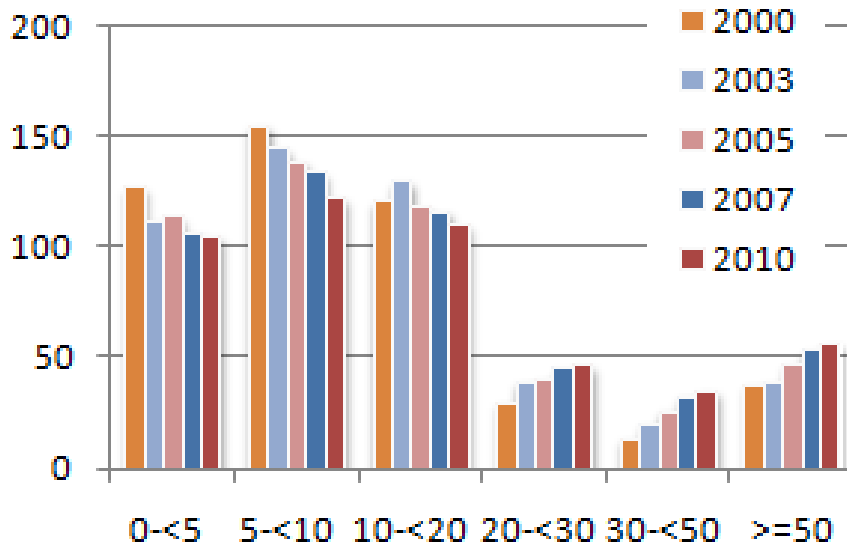
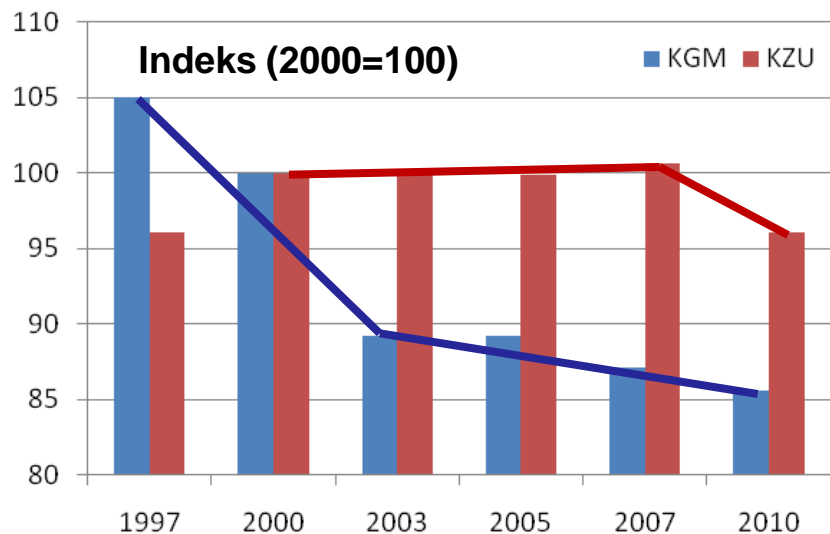
- Potenciali
- Proizvodnja
- Zunanja trgovina
- Cene
- Proračun
- Dohodek

Potenciali

KMETIJSKA GOSPODARSTVA OB POPISIH

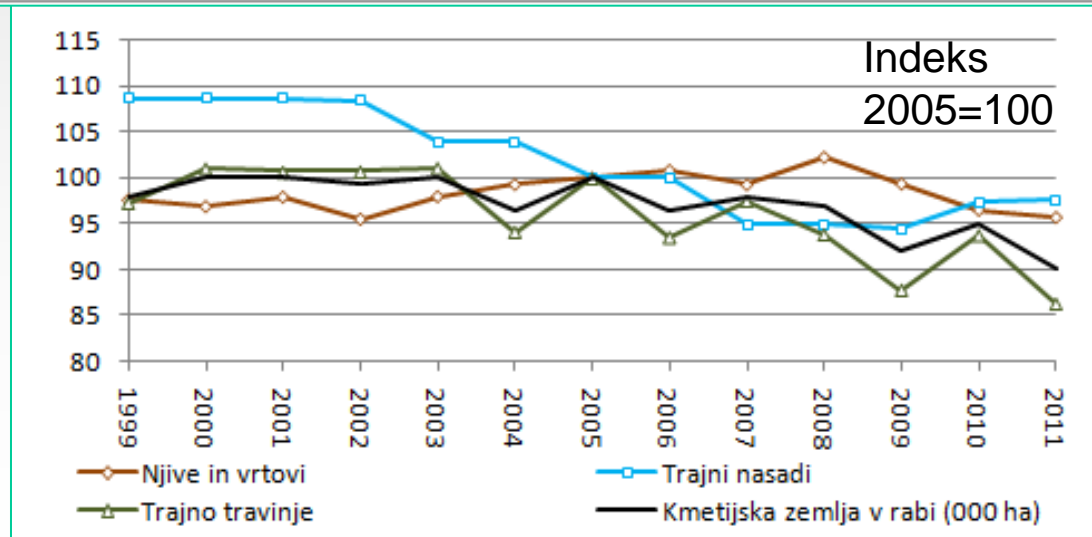
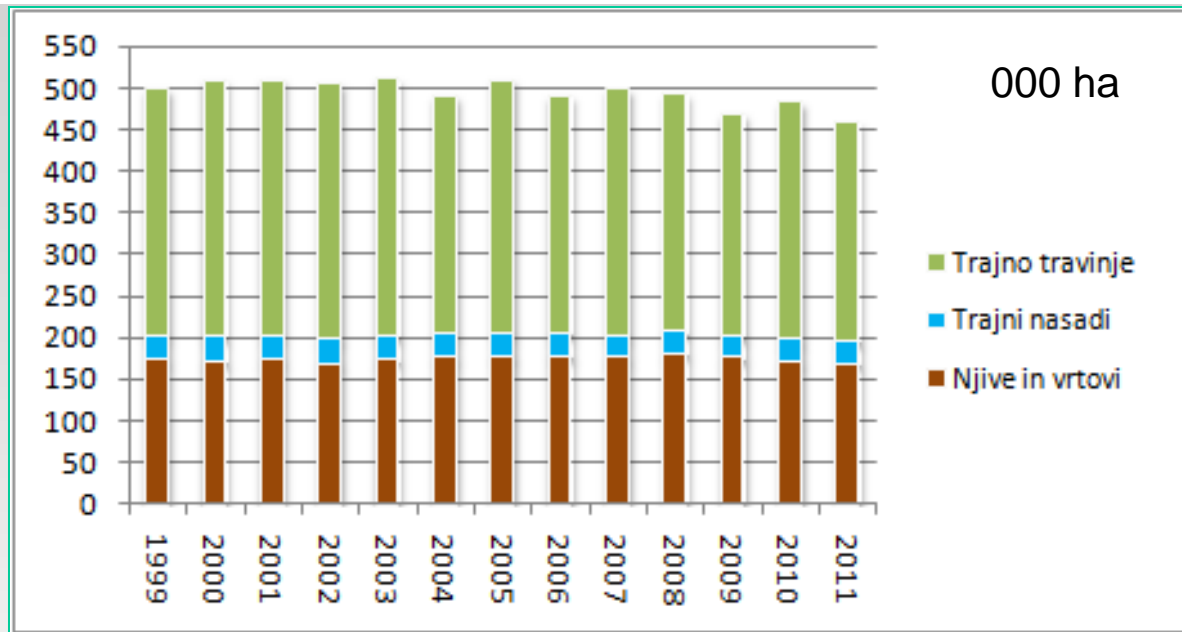
	1997	2000	2003	2005	2007	2010
Število KMG (000)	90,8	86,5	77,1	77,2	75,3	74,6
KZU (000 ha)	466,6	485,9	486,5	485,4	488,8	474,4
Povprečno KZU/KMG (ha)	5,1	5,6	6,3	6,3	6,5	6,4
Delež KMG z ≥ 20 ha KZU (%)	1,1	2,1	3,1	3,6	4,2	4,4
Delež KZU na KMG z ≥ 20 ha KZU (%)	13,2	16,9	20,4	23,5	26,9	28,9

Površina KZU po velikostnih razredih (000 ha)



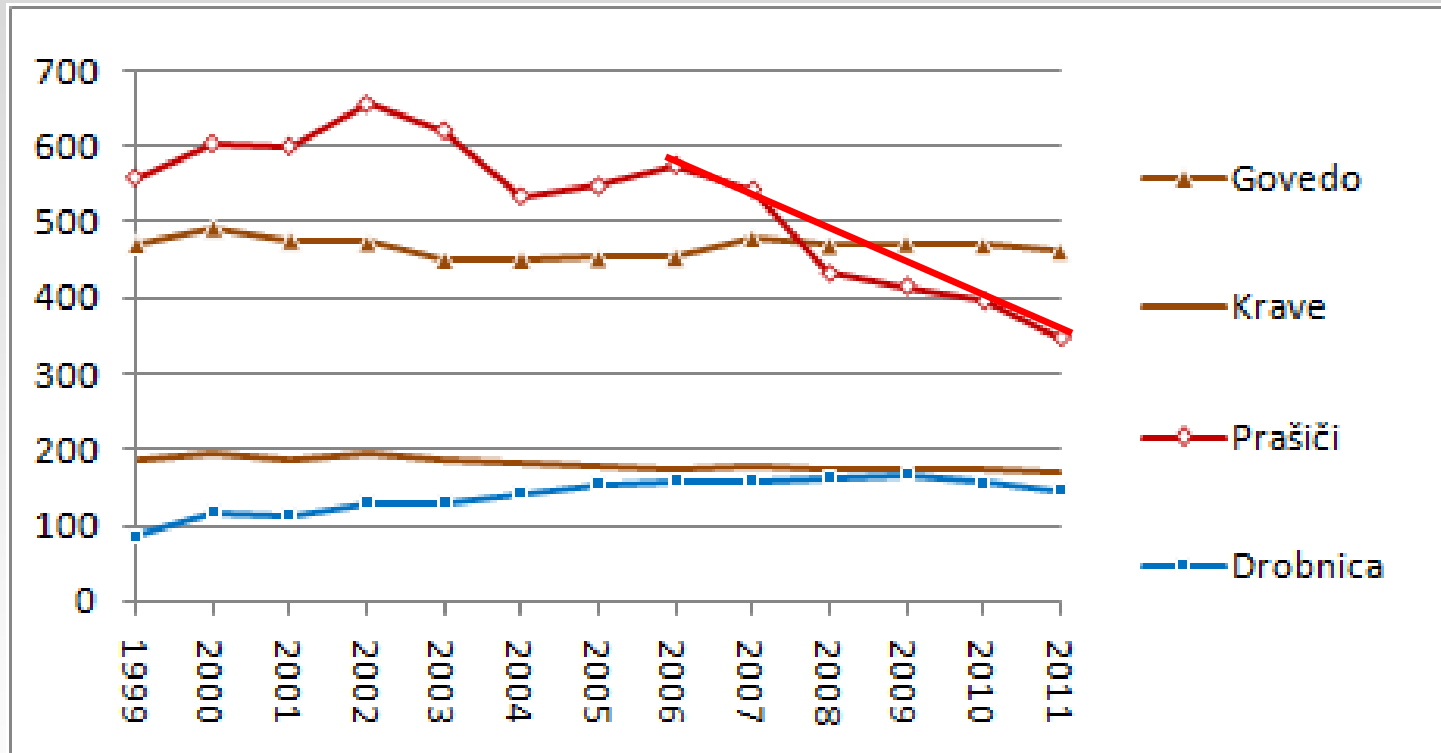
Potenciali

KMETIJSKA ZEMLJA V UPORABI



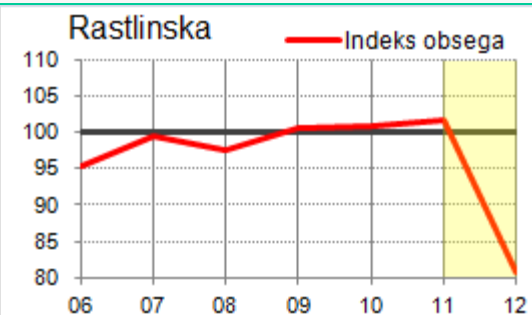
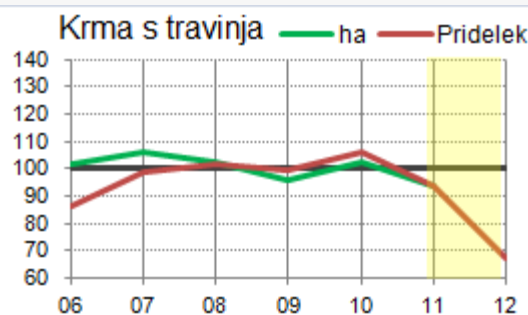
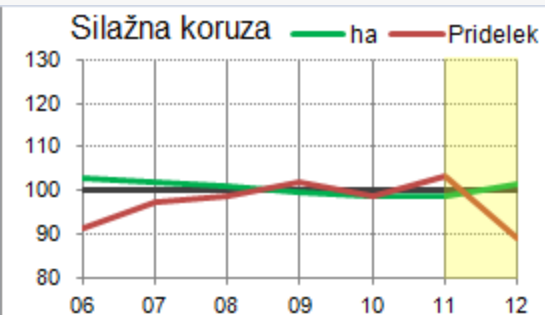
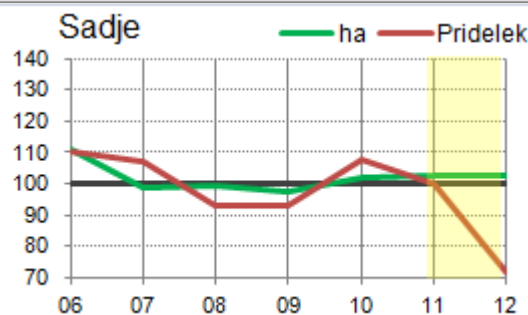
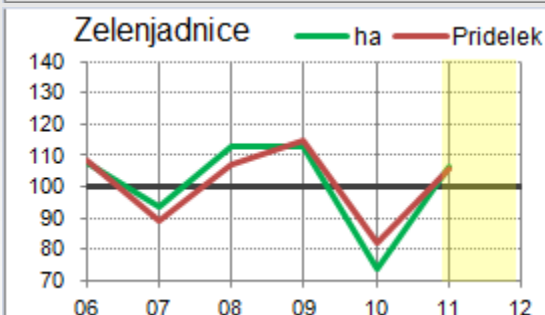
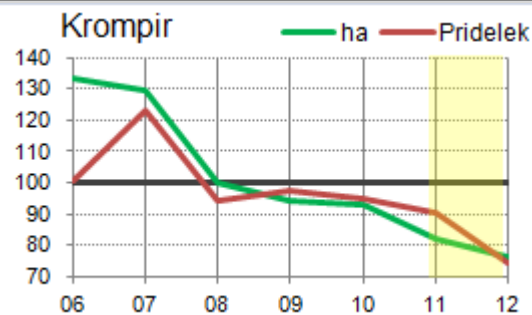
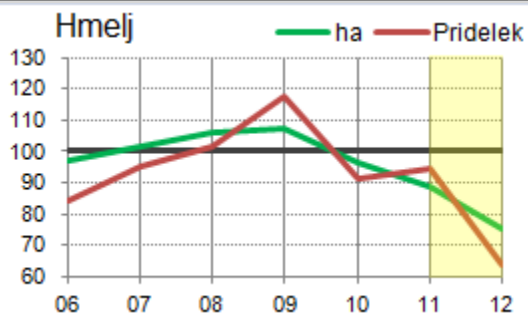
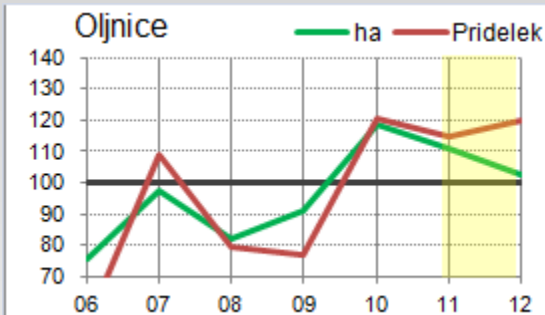
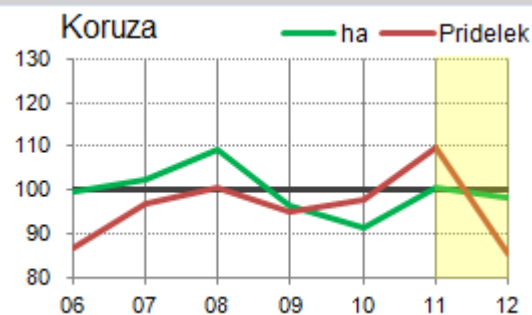
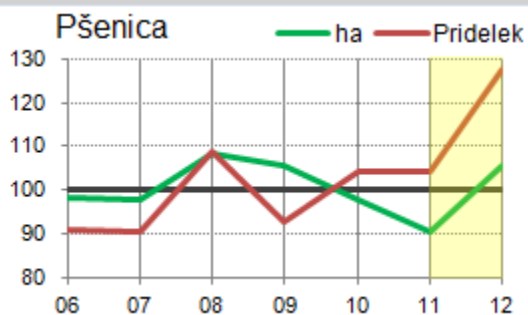
Potenciali

ŠTEVILO GOVEDI, PRAŠIČEV IN DROBNICE (konec leta; tisoč glav)



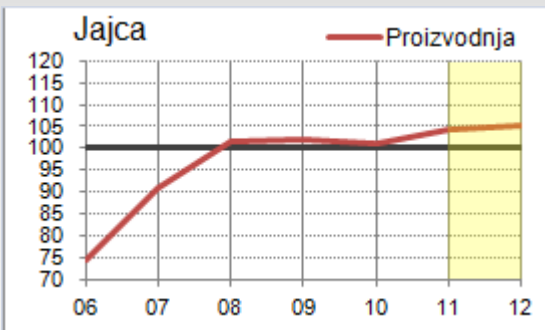
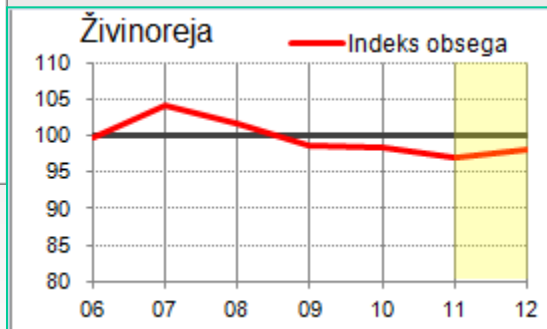
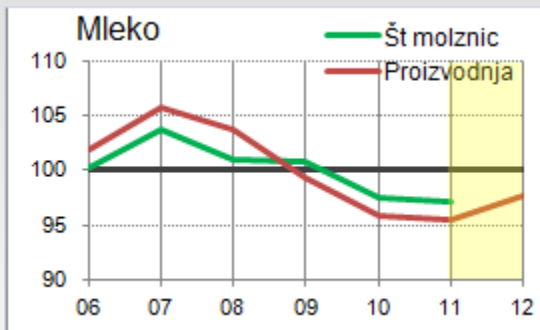
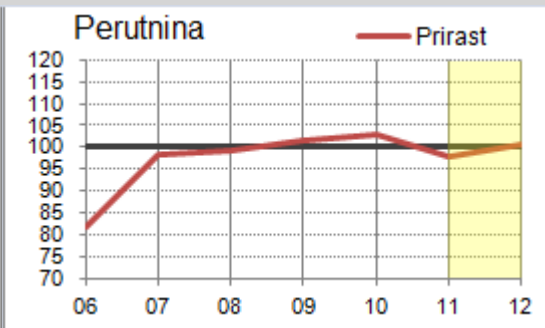
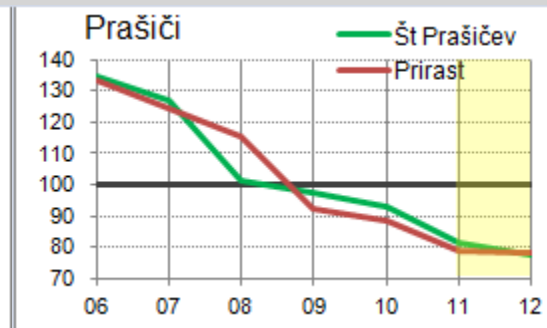
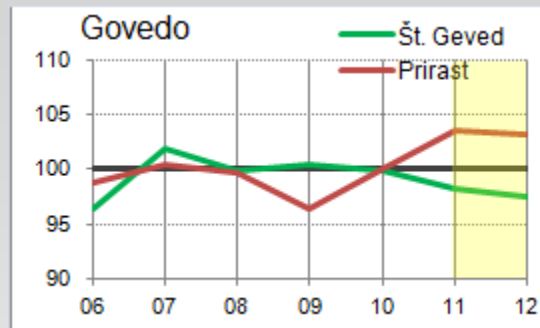
POVRŠINA IN PRIDELKI

Povprečje 2007-2011 = 100



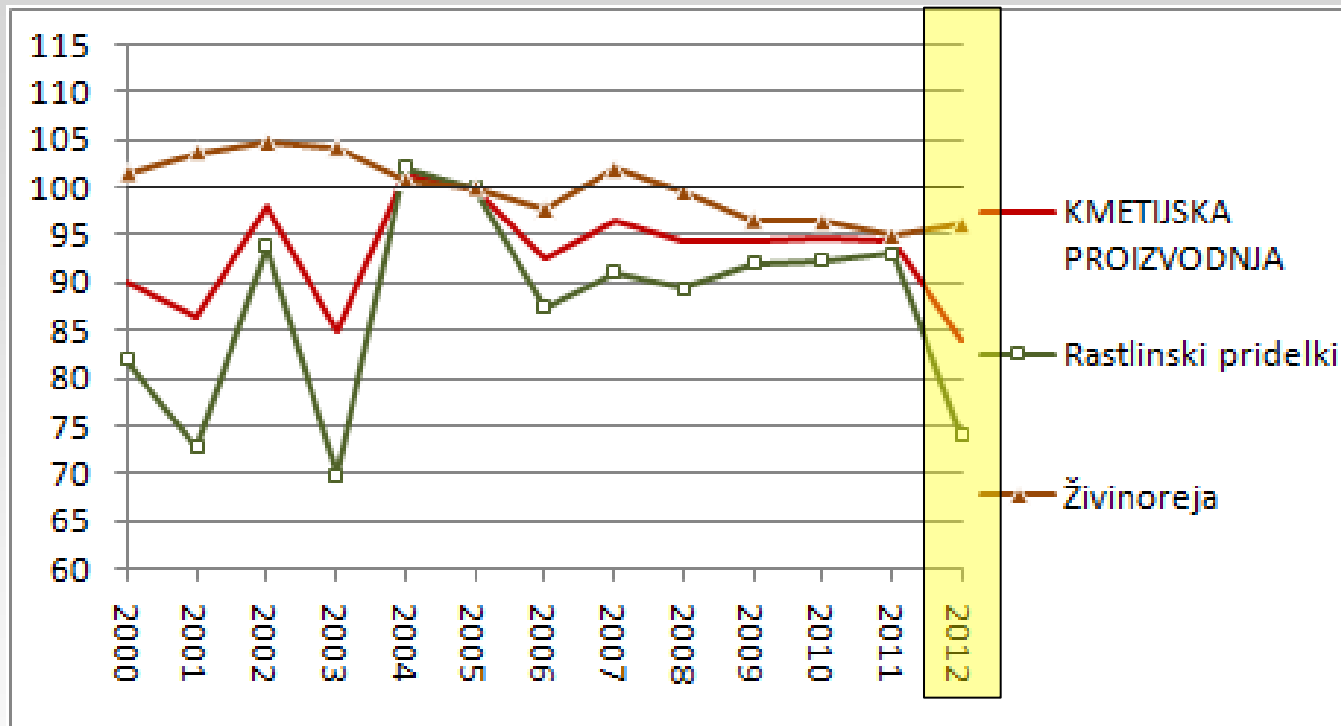
STALEŽ IN PROIZVODNJA V ŽIVINOREJI

Povprečje 2007-2011 = 100



Proizvodnja

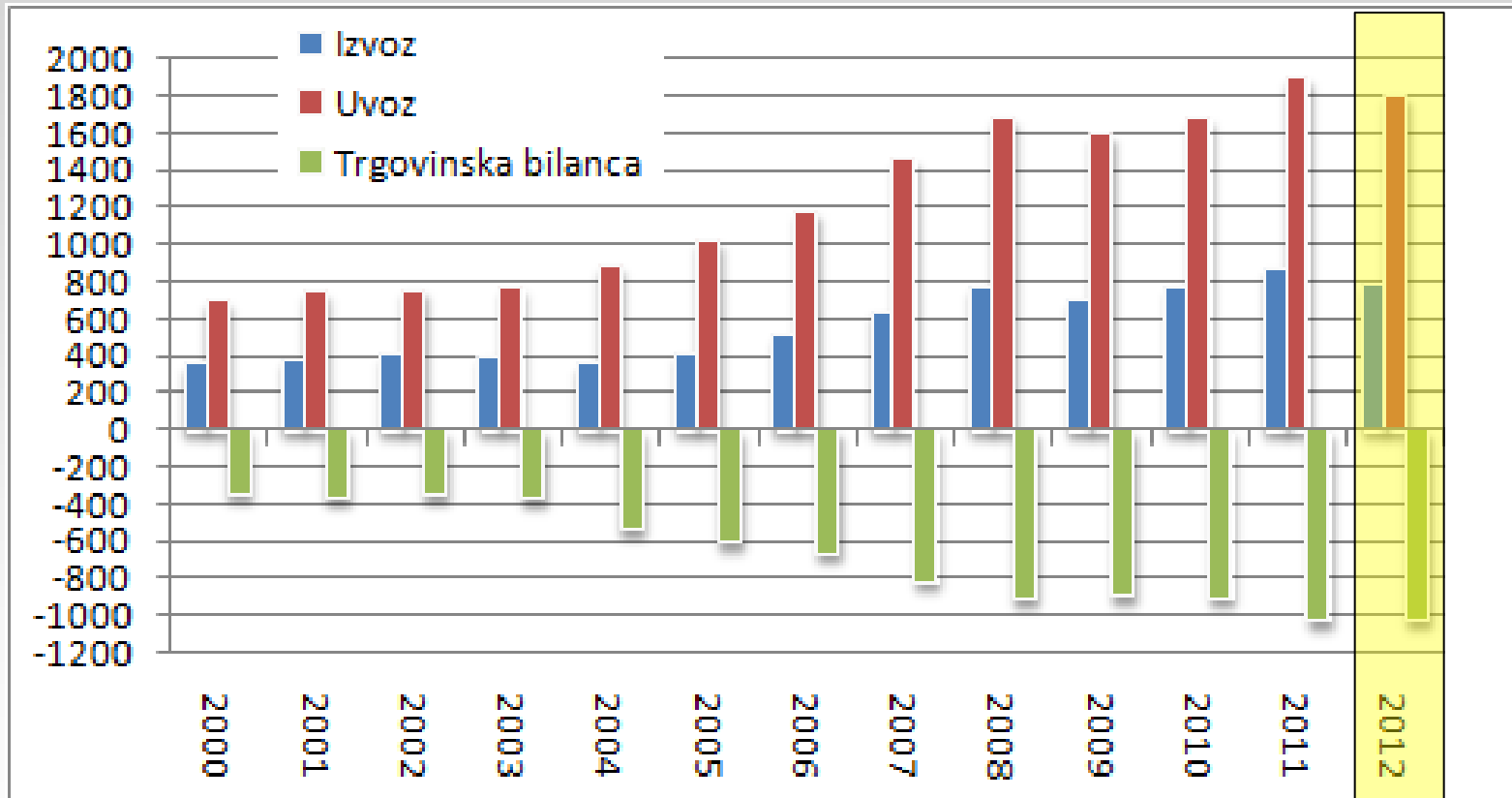
INDEKS FIZIČNEGA OBSEGA PROIZVODNJE (2005 = 100)



	2009/2008	2010/2009	2011/2010	2012/2011
Rastlinska	2,8	0,4	0,8	-20,5
Živinoreja	-2,9	-0,2	-1,5	1,2
Skupaj	0,1	0,1	-0,3	-10,9

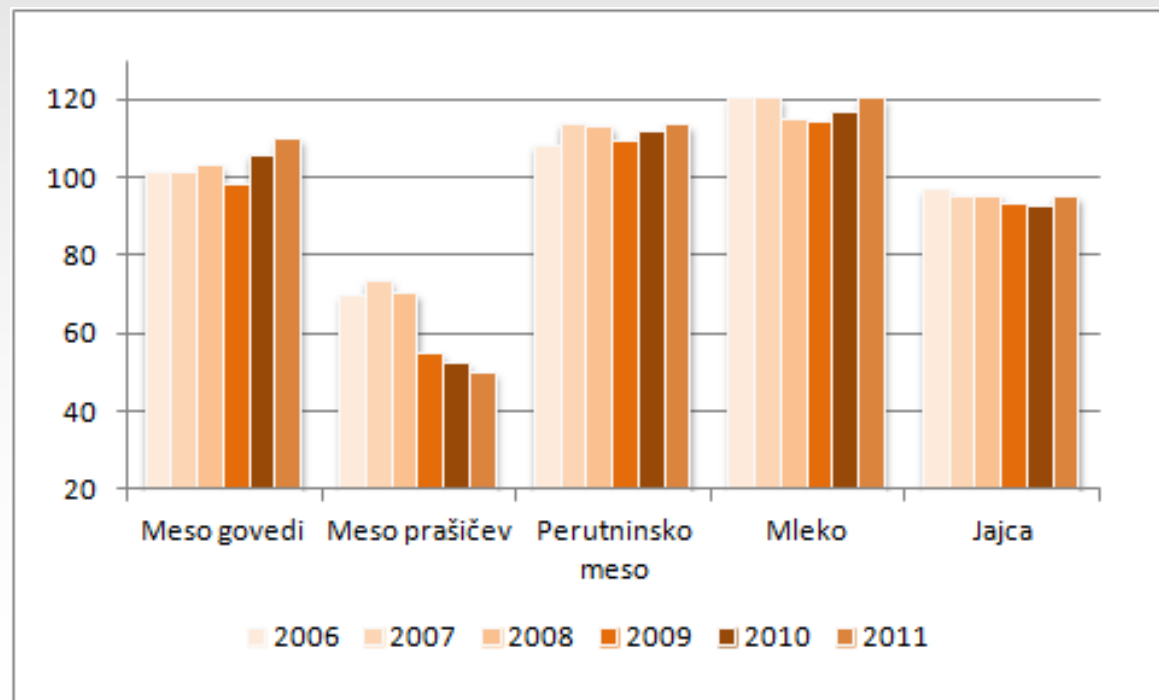
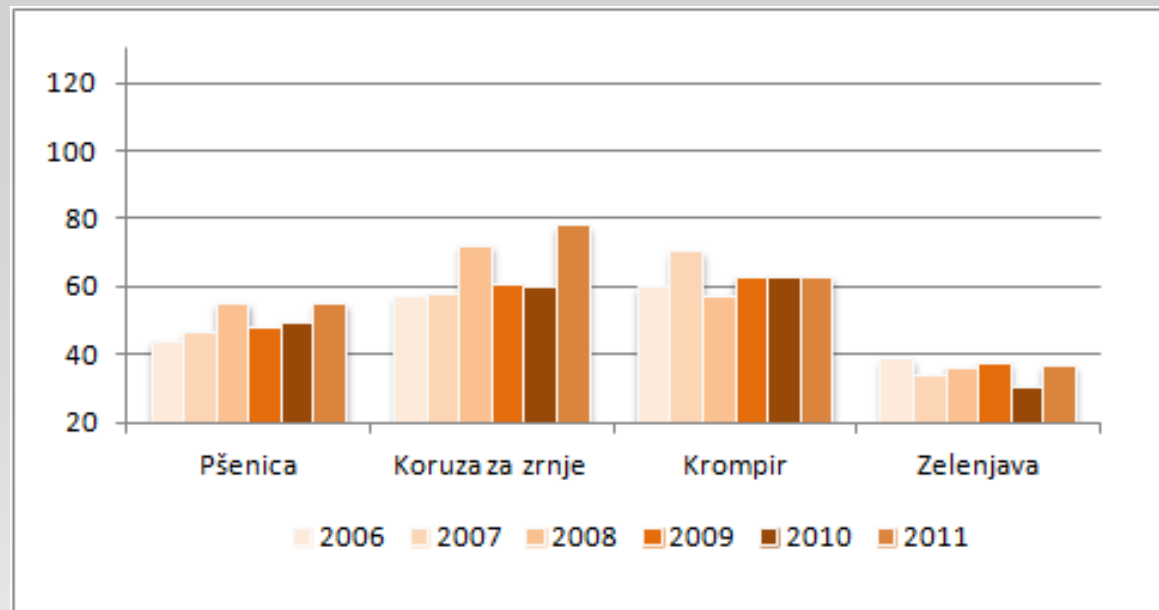
Zunanja trgovina

IZVOZ IN UVOZ TER ZUNANJE TRGOVINSKA BILANCA AGROŽIVILSKIH PROIZVODOV (MIO EUR)



Samoskrba

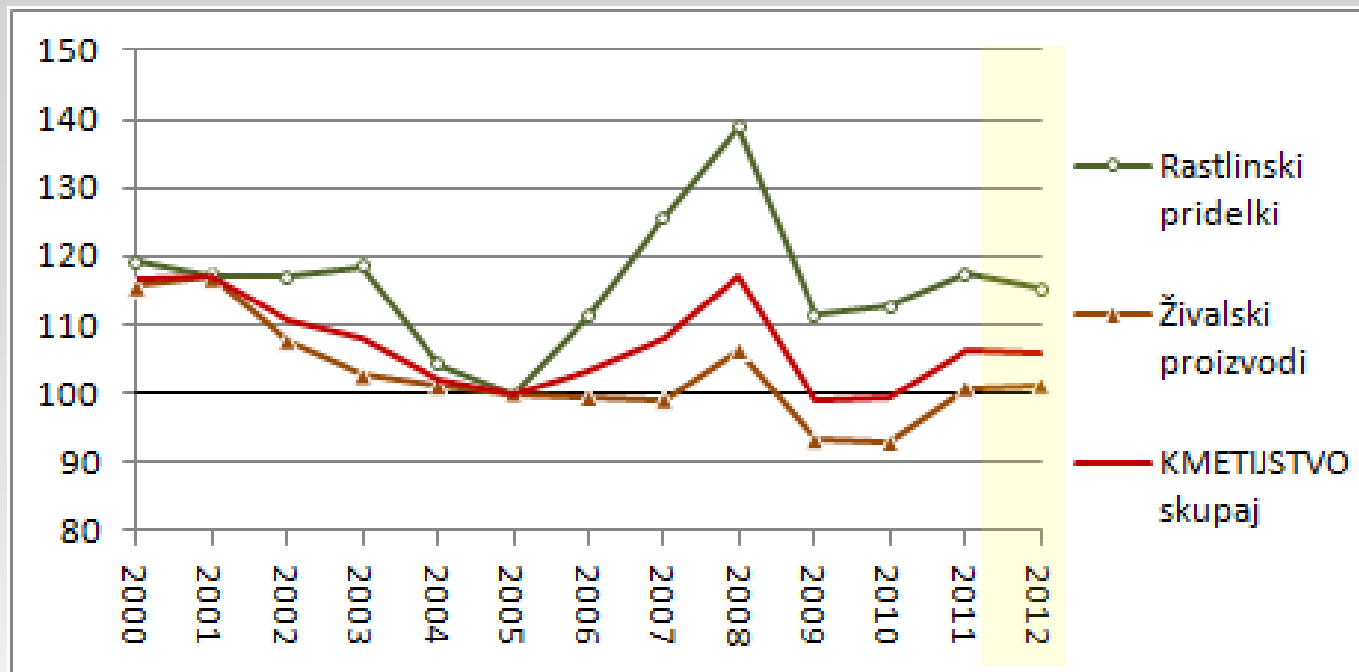
STOPNJE SAMOOSKRBE S POMEMBNEJŠIMI KMETIJSKIMI PRIDELKI (%)



Vir: KIS/SURS

Cene

REALNI INDEKSI CEN - output (2005 = 100)

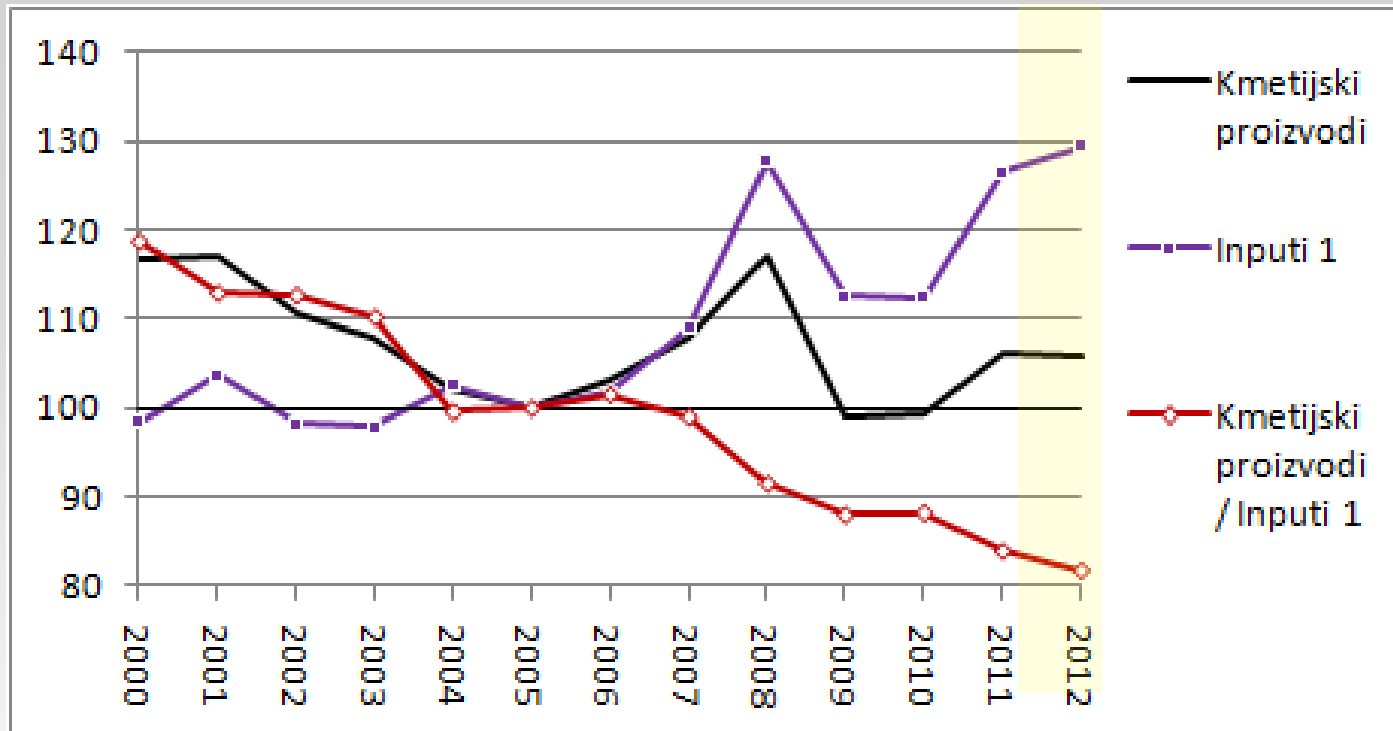


	09/08	10/09	11/10	12/11
Žito	66	137	113	114
Oljnice	77	106	128	102
Hmelj	43	57	91	98
Zelenjadnice	93	110	97	104
Sveže sadje	77	101	101	100
Govedo	100	97	110	107
Prašiči	92	98	106	107
Perutnina	94	98	104	99
Mleko	79	100	112	96

Vir: SURS; preračuni KIS

Cene

REALNI INDEKSI CEN – pariteta (2005 = 100)

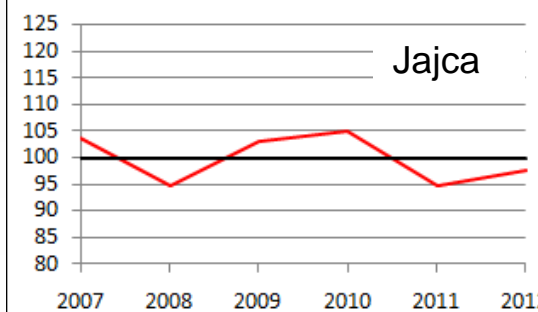
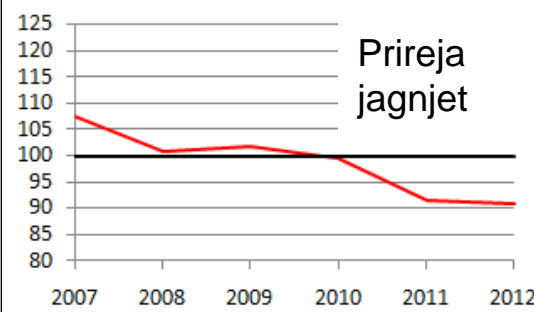
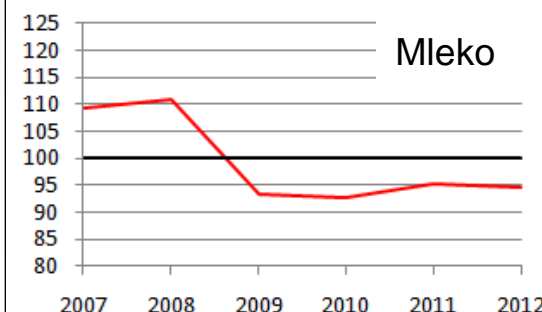
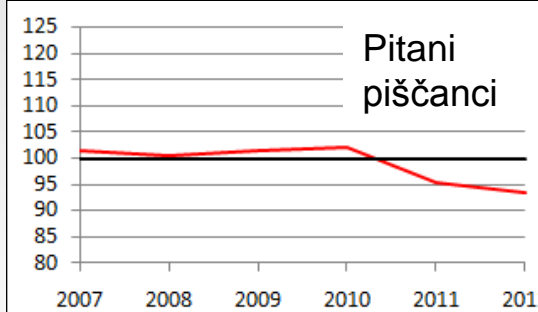
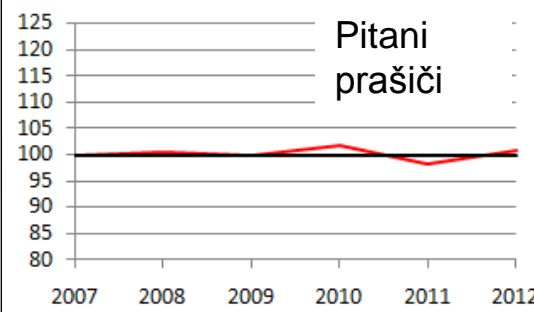
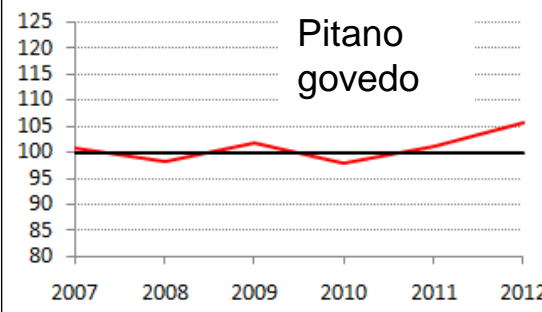
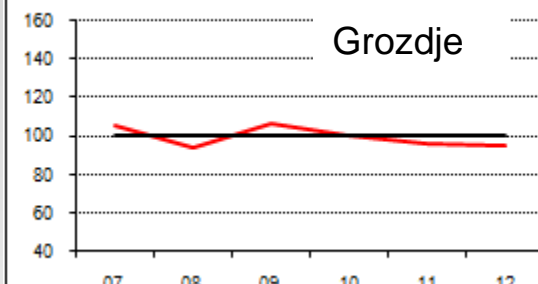
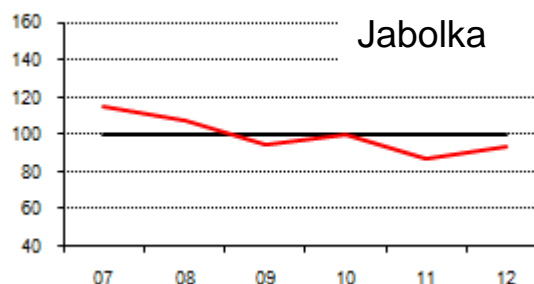
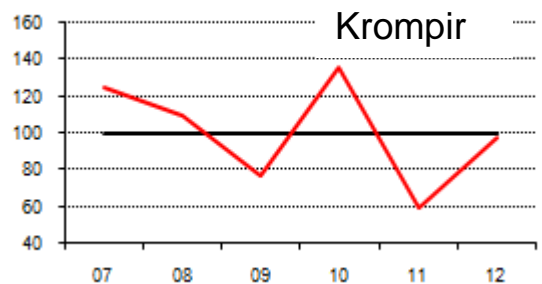
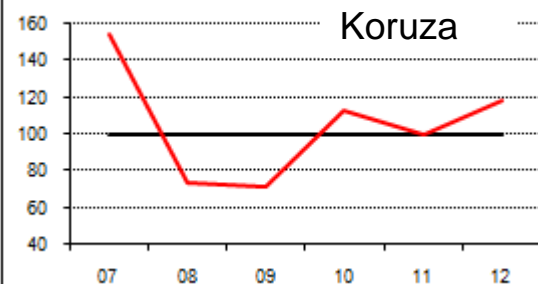
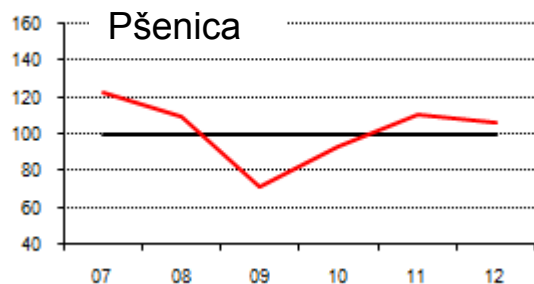


	09/08	10/09	11/10	12/11		09/08	10/09	11/10	12/11
Kmetijski proizvodi	85	100	107	100	Semena in sadike	103	89	110	102
Inputi 1	88	100	112	102	Energija; Maziva	83	116	113	107
Pariteta	96	100	95	97	Gnojila in sr.za izboljša	78	91	120	104
					Sredstva za varstvo ra	104	98	101	102
					Veterinarske storitve	102	100	100	99
					Krmila	82	98	122	101

Vir: SURS; preračuni KIS

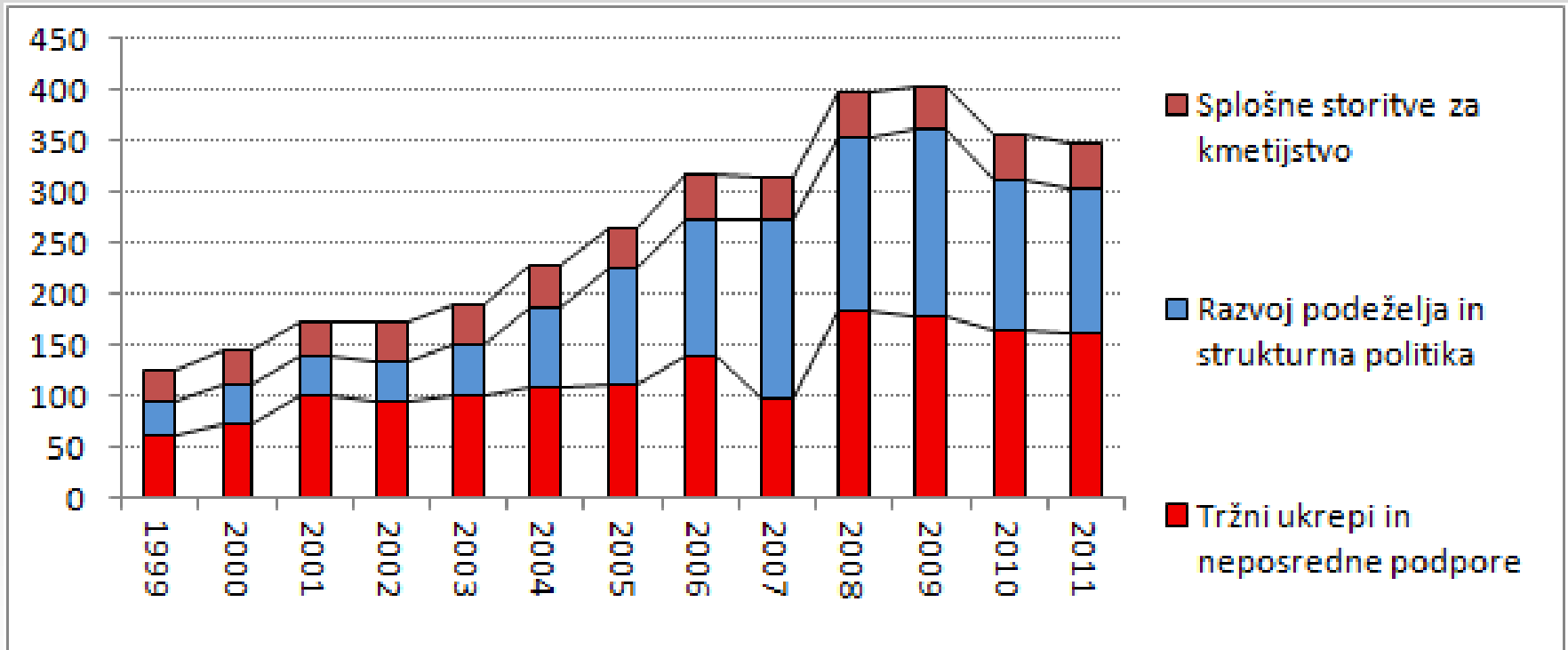
CENOVNO STROŠKOVNA PARITETA

Povprečje 2007-2011 = 100
2012 = ocena



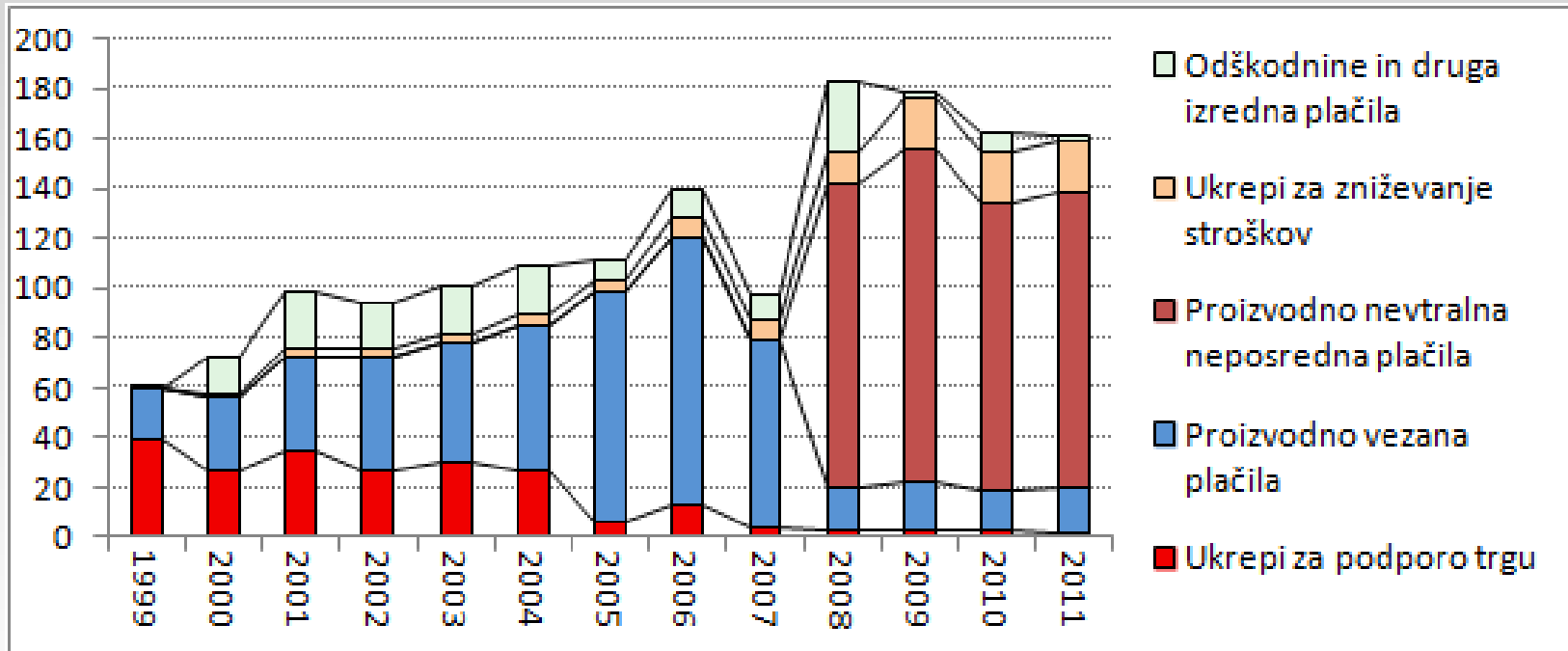
Proračun

PRORAČUNSKI IZDATKI ZA KMETIJSTVO (izplačila: milijoni EUR)



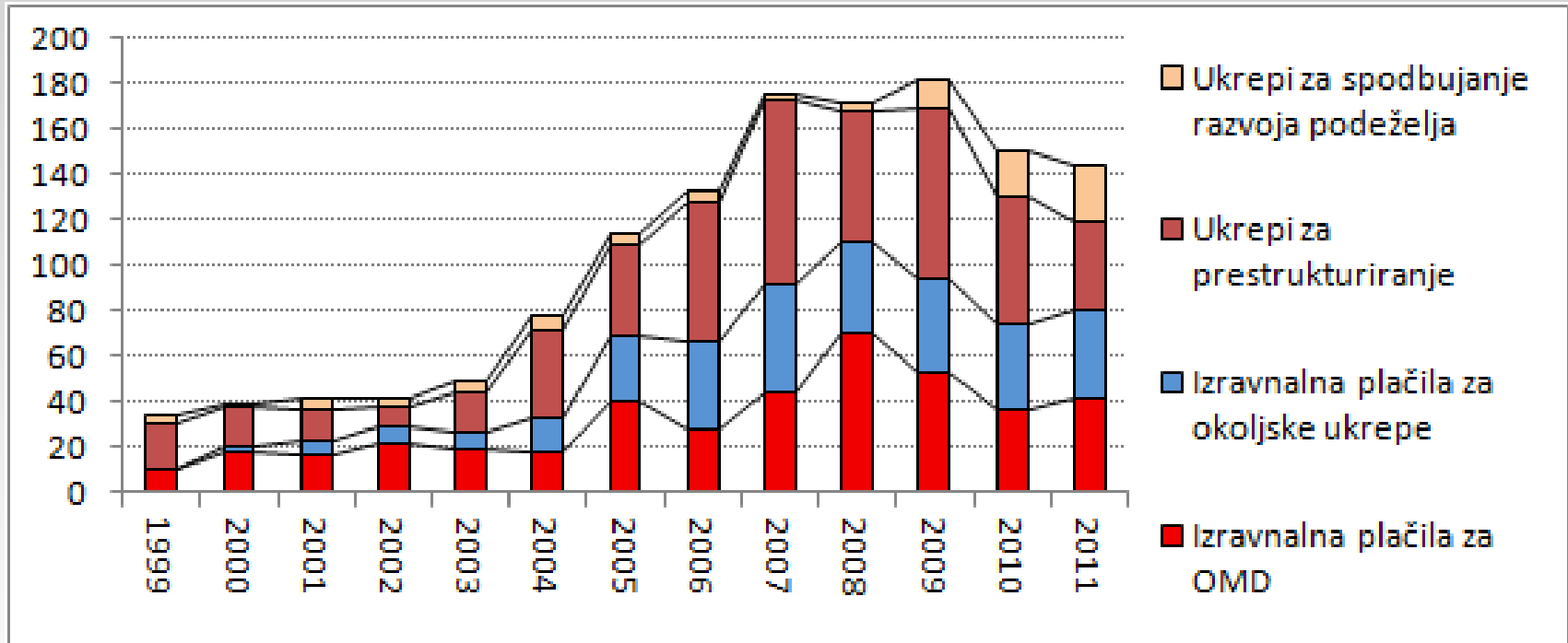
Proračun

IZDATKI TRŽNO-CENOVNE POLITIKE (izplačila: milijoni EUR)



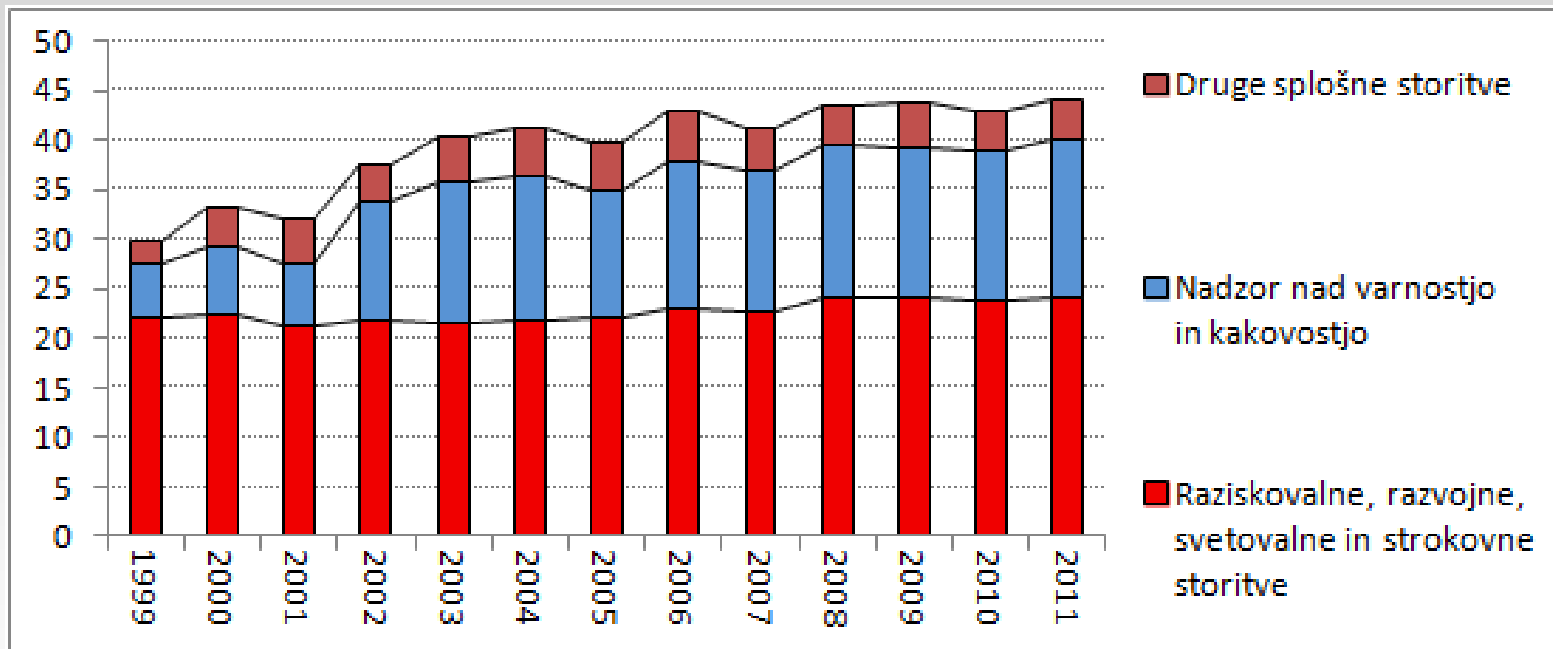
Proračun

IZDATKI ZA UKREPE POLITIKE RAZVOJA PODEŽELJA (izplačila: milijoni EUR)



Proračun

IZDATKI ZA SPLOŠNE STORITVE (izplačila: milijoni EUR)



Dohodek

KAZALCI EKONOMSKEGA RAČUNA ZA KMETIJSTVO - ERK

